



THE UNIVERSITY
OF QUEENSLAND
AUSTRALIA

CREATE CHANGE

Appointment of

Postdoctoral Research Fellow / Research Fellow – Infectious Diseases Modeller



CONTENTS

Faculty of Health, Medicine and Behavioural Sciences	01
Role of the Postdoctoral Research Fellow / Research Fellow – Infectious Diseases Modeller	02
About you	05
Conditions of employment	06
How to apply	06
The University of Queensland	07
Governance	08
Strategic direction	08
Strategic Plan 2022–2025	09
UQ Leadership Framework	10
About Brisbane	11
Further information	12



Faculty of Health, Medicine and Behavioural Sciences

The newly established Faculty of Health, Medicine and Behavioural Sciences will be an interdisciplinary powerhouse of innovation and collaboration to lead integrated solutions to the needs of the communities we serve locally and globally. UQ offers one of the widest ranges of health and behavioural sciences programs of any Australian university, and the ambition for this new Faculty will be to leverage its unified suite of esteemed schools, institutes and centres to unlock opportunities within UQ and with external partners to:

- Graduate health, medical and behavioural science professionals who are champions of interprofessional collaborative practice, culturally competent and deeply respectful of Aboriginal and Torres Strait Islander peoples, and leaders in their respective disciplines.
- Address current and emerging health sector challenges, specifically the need for a flexible workforce with a diverse skill mix, and the need to provide person and family-centred health care through collaborative decision-making in interprofessional teams.
- Grow our research and impact by exploring 'wicked problems' from a multidisciplinary perspective in collaboration with consumers and communities.
- Attract research funding from a wide range of sources (philanthropy, competitive grants, government tenders, NGO, industry).
- Meet the complex health and well-being needs of the population across the lifespan.
- Provide our students with the optimal range of educational placement opportunities to support their learning.
- Work effectively and efficiently with a range of partners locally, nationally and internationally.
- Share resources and infrastructure to further our strategic ambitions and reach in education, research, and engagement.

Comprising nine esteemed schools, and an impressive suite of Faculty and School based institutes, and research centres, the Faculty will offer unparalleled opportunities for learning, discovery, and impact. From pioneering medical breakthroughs to advancing understanding of human behaviour and well-being, our interdisciplinary approach fosters holistic approaches to healthcare and societal well-being. With a commitment to interprofessional education and a focus on health, well-being, and behaviour change, we are at the forefront of shaping the future of healthcare and improving lives locally and globally.

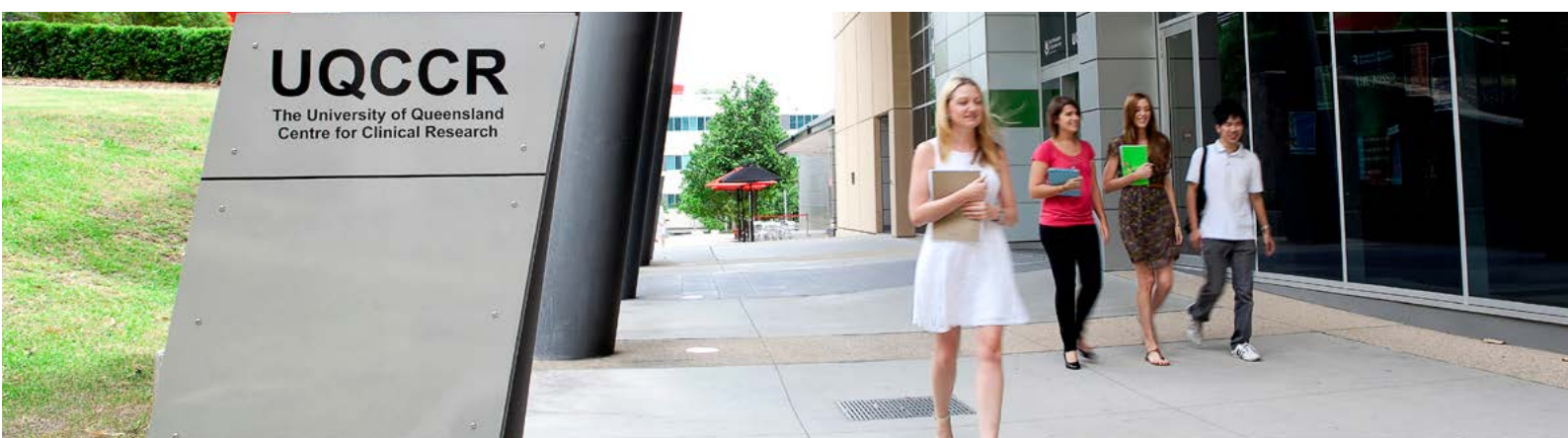
The Faculty will possess enormous strengths spanning research, teaching, industry engagement and clinical practice and staff, students, and partners can engage with groundbreaking initiatives and programs across our schools of Biomedical Sciences, Dentistry, Health and Rehabilitation Sciences, Human Movement and Nutrition Sciences, Nursing, Midwifery and Social Work, Pharmacy, Psychology, Public Health, and Medical School.



Educational offerings are informed and complemented by research across a range of fundamental and clinical areas of importance through both faculty and school embedded centres and institutes, in particular the Frazer and UQ Mater Institutes, UQ's POCHC Centre for Indigenous Health, Child Health Research Centre, and UQ Centre for Clinical Research, as well as a number of other centres and alliances, including but not limited to Business and Economics of Health, Health Services Research, Youth Substance Use Research, Queensland Alliance for Environmental Health Sciences, RECOVER Injury Research, and Southern Queensland Rural Health.

UQ Centre for Clinical Research

Our focus is to achieve excellence in health-centred research, to improve quality of life. We offer state-of-the-art facilities and bring together leading health professionals, clinicians and scientists from around the globe to facilitate innovation and knowledge translation.



Role of the Postdoctoral Research Fellow / Research Fellow - Infectious Diseases Modeller

About this opportunity

Join the University of Queensland's newly established Epidemic Modelling, Mathematical Analysis and Statistics Lab (Emmas Lab) as a Postdoctoral Research Fellow or Research Fellow and make a global impact in infectious disease modelling. Working within a world-class team, you'll partner with UQ's Operational Research and Decision Support for Prevention, Control and Elimination of Infectious Diseases (ODESI) team, experts in disease prevention and control, to advance quantitative analysis of infectious diseases. As part of an extensive network, Emmas Lab collaborates with leading institutions like Oxford University and Mahidol University and engages with national and international policymakers on critical research projects. In this role, you'll develop advanced disease models, publish impactful research, contribute to multi-institutional projects, and help secure research funding, all while mentoring emerging researchers.

Duties

Postdoctoral Research Fellow

Research

- Develop an emerging research profile in quantitative analysis of infectious diseases
- Collaborate with the ODeSI program to develop disease models.
- Produces quality research outputs consistent with discipline norms by publishing or exhibiting in high quality outlets.
- Participate in applications for competitive research funding to support projects and activities.
- Work with colleagues in the development of joint research projects and applications for competitive research funding support.

Supervision and researcher development

- Demonstrates personal effectiveness in supervision and the management of researcher development.
- Contribute to the effective supervision of Honours and Higher Degree by Research students (as appropriate).

Citizenship and service

- Demonstrate citizenship behaviours that align to the UQ values.
- Shows leadership of self through collaboration and active participation in priority activities for the unit
- Provide support to other academic positions and unit operations as needed during other team members absences.
- Contribute to internal service roles and administrative processes as required, including participation in decision-making and service on relevant committees.
- Collaborate in service activities external to the immediate organisation unit.
- Begin to develop external links and partnerships by cultivating relationships with industry, government departments, professional bodies and the wider community.



Research Fellow

Research

- Develop a research profile in quantitative analysis of infectious diseases
- Collaborate with the ODeSI program to develop disease models.
- Produces quality translational research outputs consistent with discipline norms by publishing or exhibiting in national research journals, other appropriate refereed publications and conference publications, with a lead role in some outputs.
- Participate in applications for competitive research funding to support projects and activities which includes actively seeking, obtaining and managing research funding.
- Work with the project team and partners to develop and conduct joint research and applications for competitive research funding support.

Supervision and researcher development

- Demonstrates personal effectiveness in supervision and management and development of researcher capability and skill.
- Demonstrate a track record of the effective supervision of Honours and Higher Degree by Research students.

Citizenship and service

- Demonstrate behaviours that align to the UQ values.
- Shows leadership of self and others through mentoring, collaboration and active participation in priority activities for the unit
- Provide support to other academic positions and unit operations as needed during other team members absences.
- Effectively and efficiently manage internal service roles and administrative processes as required, including participation in decision-making and service on relevant committees.
- Collaborate in service activities external to the immediate organisation unit.
- Actively pursue and develop external links and partnerships by cultivating relationships with industry, government departments, professional bodies and the wider community.

Other

Ensure you are aware of and comply with legislation and University policy relevant to the duties undertaken, including but not exclusive to:

- The University's [Code of Conduct](#).
- Requirements of the Queensland occupational health and safety (OH&S) legislation and related [OH&S responsibilities and procedures](#) developed by the University, Faculty, Institute or School.
- The adoption of sustainable practices in all work activities, and compliance with associated legislation and related University [sustainability responsibilities and procedures](#).
- Requirements of the *Education Services for Overseas Students Act 2000*, the *National Code 2007* and associated legislation, and related [responsibilities and procedures](#) developed by the University.



About you

Postdoctoral Research Fellow

- Completion or near completion of a PhD in a quantitative field such as statistics, applied mathematics, computer science, data science, epidemiology, ecology or modelling.
- Competent in at least one open-source programming language; such as python, Julia, R.
- Familiar with version control principles.
- An emerging profile in research in the discipline area.
- Evidence of publications in reputed refereed journals and presenting at conferences.
- Evidence of contributions towards successfully obtaining external research funding.
- Some experience in meaningful internal service roles and contributions towards external activities.
- Experience and knowledge of applied statistical and mathematical modelling. This includes command of an open-access language such as R, Julia or Python
- Experience in other packages is desirable: including MATLAB, stata, ArcGIS/QGIS/MapInfo or similar.

Research Fellow

- Completion or near completion of a PhD in a quantitative field such as statistics, applied mathematics, computer science, data science, epidemiology, ecology or modelling.
- Highly competent in at least one open-source programming language; such as python, Julia, R.
- Familiar with version control principles.
- A growing profile in research in the discipline area.
- Methodological expert in one or more of the following: Modelling (statistical and/or mathematical); Data science (big data, visualisation tools, AI and machine learning); Spatial-temporal epidemiology/modelling and disease mapping; Bayesian statistics.
- A developing reputation and track record of publications in reputed refereed journals and presenting at conferences.
- Evidence of successfully seeking, obtaining and managing external research funding.
- Experience and knowledge of applied statistical and mathematical modelling. This includes command of an open-access language such as R, Julia or Python.
- Experience in other packages is desirable: including MATLAB, stata, ArcGIS/QGIS/MapInfo or similar.
- A growing record of supervision of Honours and Research Higher Degree students to successful completion.
- Experience in meaningful internal service roles in conjunction with active contributions to external activities.



Conditions of employment

Employment type

This is a full-time (100%), fixed-term position for up to four years.

Classification

Base salary will be in the range of \$78,871 – \$130,765, plus 17% superannuation (Academic Level A or B).

How to apply

All applicants must upload the following documents through the [UQ Careers](#) portal in order for your application to be considered:

- Resume
- Cover letter
- Responses to the 'About You' section



The University of Queensland

For more than a century, The University of Queensland (UQ) has created positive change for society by delivering knowledge leadership for a better world.

UQ ranks among the world's top universities, as measured by several key independent rankings, including the CWTS Leiden Ranking (35), U.S. News Best Global Universities Rankings (36), the Performance Ranking of Scientific Papers for World Universities (33), QS World University Rankings (40), Academic Ranking of World Universities (63), and Times Higher Education World University Rankings (77).

At UQ, we're changing the way higher education is imagined and experienced. Our students enjoy a rich campus experience, including a range of accommodation options, as well as innovative and flexible learning pathways, diverse and dynamic partnership opportunities, and an integrated digital and campus learning environment.

More than 55,000 students – including the majority of Queensland's highest academic achievers as well as top interstate and overseas students – study across UQ's 4 beautiful campuses in South East Queensland at St Lucia, Herston, Gatton and Dutton Park. They include around 20,000 postgraduate and approximately 21,500 international students who contribute to a diverse, supportive and inclusive campus community.

With a strong focus on teaching excellence, having won more national teaching awards than any other Australian university, UQ is committed to providing students with the best opportunities and practical experiences during their time with us, empowering them with transferable knowledge and skills that will prepare them to exceed expectations throughout their careers.

UQ's 332,000 graduates are an engaged network of global alumni spanning 184 countries, and include more than 17,700 PhDs.

UQ's 6 faculties, 8 globally recognised research institutes and more than 100 research centres attract an interdisciplinary community of 2,500 scientists, social scientists and engineers, who champion research excellence and continue UQ's tradition of research leadership. This is reflected in UQ being the number one recipient of Australian Research Council Fellowships and Awards nationally across all scheme years (452 awards worth \$339 million).

UQ has an outstanding track record in commercialising innovation, with major technologies employed across the globe and gross product sales of more than \$57 billion.

UQ is one of only 4 Australian members of the global Universitas 21, a founding member of the Group of Eight (Go8) universities, a member of Universities Australia, and a member of the Association of Pacific Rim Universities (APRU).

UQ employs more than 7,500 academic and professional staff (full-time equivalent) and has a \$2.47 billion annual operating budget.



Governance

The University of Queensland is governed by a 22-member Senate representing University and community interests. Senate is led by the Chancellor, elected by the Senate. The University of Queensland Act 1998 grants Senate wide powers to appoint staff, manage and control University affairs and property, and manage and control finances to promote the University's interests.

uq.edu.au/about/governance

Strategic direction

By 2032, UQ will be known as a university that:



Delivers highly sought-after graduates, who are prepared for future success through rich and broad educational experiences



Leads as a premier provider of high-quality postgraduate and lifelong learning opportunities



Leverages the breadth and depth of its research capabilities and vibrant precincts to address the world's most pressing challenges



Is a trusted and agile partner widely regarded as a leader in entrepreneurship, knowledge exchange and commercialisation



Has an extensive global reach in education and research with a strong commitment to capacity building in the Indo-Pacific



Breaks down barriers to education through the targeted and effective Queensland Commitment



Is values-led, deeply committed to delivering for the public good and supporting our people, leading reconciliation, and embracing different life experiences and perspectives



Strategic plan 2022-2025

Our vision

Knowledge leadership for a better world.

Our mission

Our core purpose is to deliver for the public good through excellence in education, research and engagement with our communities and partners: local, national and global.

Our values

What we strive for

Creativity

We apply our creativity as a way of seeking progress. We value new ideas, seek fresh perspectives and pursue game-changing innovations and opportunities

Excellence

We strive for excellence in everything we do. We apply the highest standards to our work to achieve the greatest impact for the benefit of communities everywhere.

Central to what we do

Truth

Truth is central to all that we do as a university. We seek truth through our focus on the advancement and dissemination of knowledge, and our deep commitment to academic freedom and freedom of expression.

How we work together

Integrity

We always act with integrity. As stewards of the University's resources and reputation, we are honest, ethical and principled.

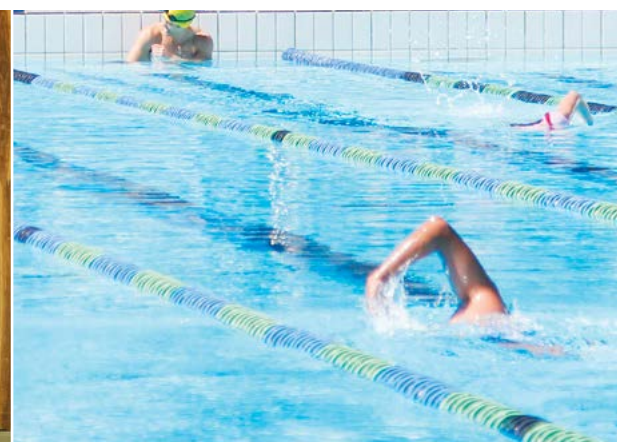
Courage

We are courageous in our decision-making. We are ambitious, bold and agile. We demonstrate moral courage, so that we are always guided by a sense of what is right.

Respect and inclusivity

We provide a caring, inclusive and empowering environment for all. We engage respectfully with one another and promote the value that our diversity brings to our whole community.

about.uq.edu.au/strategic-plan

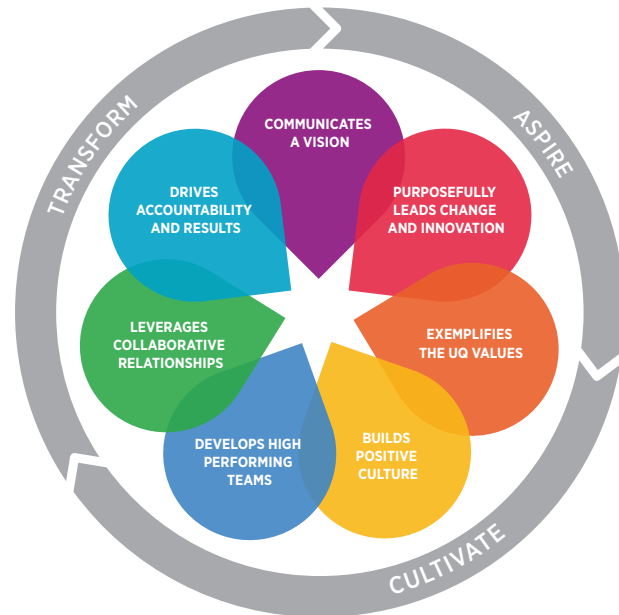


UQ Leadership Framework

As a leader at UQ you are a role model for our values.

Our leaders act with integrity and prioritise the development and growth of our people to ensure excellence for the long term.

The Leadership Framework is underpinned by seven capabilities expected by all UQ leaders.



Aspire

Enact UQ's vision, anticipate change and leverage innovation.

1. Communicates a Vision

Develops and communicates a clear vision and direction for the future, aligned with UQ's vision, values and aspirations.

2. Purposefully leads change and innovation

Remains agile and effectively manages change and unexpected disruption by finding innovative solutions.

Cultivate

Exemplify the UQ values and develop high performing teams and positive culture.

3. Exemplifies the UQ Values

Role models UQ values and demonstrates loyalty to the University.

4. Develops high performing teams

Develops empowered and high performing teams, investing time, energy and resources into helping people achieve their potential.

5. Builds positive culture

Creates respectful and constructive workplaces where people feel safe and valued, and addresses unacceptable behaviours.

Transform

Deliver results that make a difference and create long-term value.

6. Leverages collaborative relationships

Identifies opportunities to collaborate and forges partnerships, embracing the ethos of 'One UQ'.

7. Drives accountability and results

Holds self and others accountable for delivering against objectives and is focused on creating long-term value for UQ.



About Brisbane

Brisbane is the sunny, sophisticated capital city of Queensland and gateway to many famous attractions. Australia's third largest city and fastest-growing capital with a population of more than 2.5 million, it offers a safe, friendly, multicultural environment characterised by the Brisbane River, parklands, convention facilities, museums, theatres, art galleries, a casino, malls, shopping districts, and a host of cosmopolitan restaurants and cafes.

Selected as host city for the 2032 Olympic and Paralympic Games, visitors can expect unbeatable sports experiences in 37 world-class venues, set against a backdrop of iconic beachfronts, breath-taking rural hinterland, and an exciting city rich in culture and entertainment.

Brisbane also offers a range of lifestyle benefits. Combine artistic and outdoor adventures at South Bank, where cultural institutions and restaurants meet riverside gardens and a lagoon. Take a paddle steamer or ferry down the Brisbane River, abseil Kangaroo Point cliffs, or bike ride through the City Botanic Gardens. Or enjoy a day trip to Moreton Island, Noosa, the Sunshine Coast or Gold Coast, or visit beautiful national parks, rainforests and tourist attractions such as Australia Zoo, Dreamworld and other theme parks.

The perfect place to raise a family, Brisbane has been dubbed a food and drink lover's paradise, and is also one of Australia's most liveable and affordable capital cities, with sunny days almost all year round and enough rainfall to keep the city and suburbs cool and green.

A few hours drive north from Brisbane is the Great Barrier Reef, one of the 'natural wonders of the world'. As the largest World Heritage Area, it stretches more than 2,000 kilometres alongside the coast, and is home to around 1,500 species of fish and 350 types of coral. Stradbroke and Fraser Islands are also world-famous attractions close to Brisbane, featuring some of the largest sand dunes in the world.

A leader in education

Brisbane has a wide range of high-quality schools at primary and secondary level, religious and non-denominational, single-sex and co-educational, with many offering excellence programs or other specialty features such as the International Baccalaureate. Brisbane also offers some of the greatest learning institutes in Australia, with 3 internationally recognised universities covering all areas of study from law and medicine through to business, marketing, tourism, IT and biotechnology. The University of Queensland (UQ) is one of Australia's leading research and teaching institutes, ranking among the world's top universities.

Lifestyle

In the heart of Brisbane city, Queen Street Mall is a vibrant shopping and lifestyle precinct and is Australia's most popular pedestrian mall. Brisbane is also the home for many of Queensland and Australia's major sporting events in rugby league, rugby union, AFL and cricket.

Brisbane residents have excellent access to health care in both public and private sectors, covering hospitals, general practitioners, dentists, and other allied healthcare professionals. The numerous public and private hospitals include the Princess Alexandra Hospital, the Mater Hospital network, the Queensland Children's Hospital, and the Royal Brisbane and Women's Hospital. Urgent and emergency medical care is readily available to everyone.

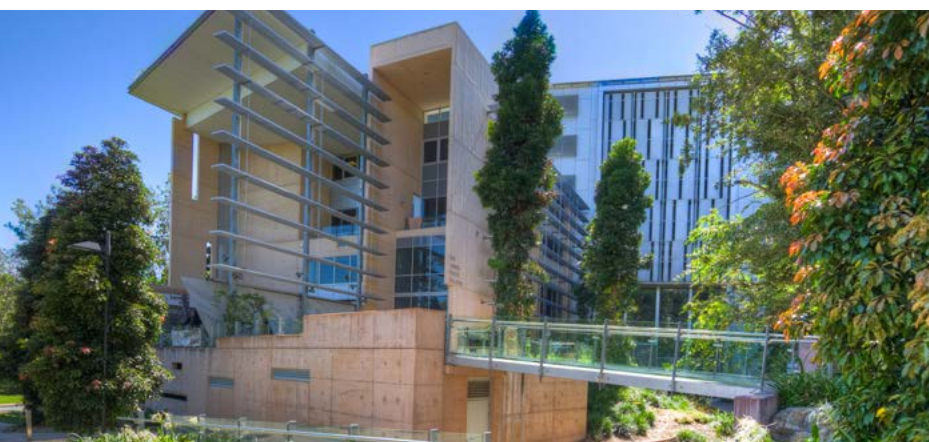


Further information

General information on the University is available through the University's website: uq.edu.au

Other documents which you may wish to refer to include:

- Annual Report:
about.uq.edu.au/organisation/policies-procedures-guidelines/annual-reports
- Governance:
about.uq.edu.au/governance
- Key statistics:
pbi.uq.edu.au/ClientServices/UQStatistics/index.aspx
- Organisation chart:
about.uq.edu.au/files/5643/org-chart.pdf
- Research at UQ:
research.uq.edu.au
- Strategic Plan 2022–2025:
about.uq.edu.au/strategic-plan
- UQ Global Strategy:
global-strategy.uq.edu.au
- UQ Reconciliation Action Plan:
about.uq.edu.au/reconciliation/plan
- UQ Aboriginal and Torres Strait Islander Employment Strategy:
staff.uq.edu.au/files/24066/uq-indigenous-employment-strategy-2019.pdf





THE UNIVERSITY
OF QUEENSLAND
AUSTRALIA

CREATE CHANGE

uq.edu.au