



THE UNIVERSITY  
OF QUEENSLAND  
AUSTRALIA

CREATE CHANGE

**Appointment of**  
Postdoctoral Research Fellow  
/ Research Fellow / Senior  
Research Fellow – Epidemiology





# CONTENTS

Faculty of Health, Medicine and Behavioural Sciences	01
School of Public Health	02
Role of the Postdoctoral Research Fellow / Research Fellow / Senior Research Fellow – Epidemiology	03
About you	05
Conditions of employment	06
How to apply	06
The University of Queensland	07
Governance	08
Strategic direction	08
Strategic Plan 2022–2025	09
UQ Leadership Framework	10
About Brisbane	11
Further information	12



## Faculty of Health, Medicine and Behavioural Sciences

With effect from 1 January 2025, the newly established Faculty of Health, Medicine and Behavioural Sciences will be an interdisciplinary powerhouse of innovation and collaboration to lead integrated solutions to the needs of the communities we serve locally and globally. UQ offers one of the widest ranges of health and behavioural sciences programs of any Australian university, and the ambition for this new Faculty will be to leverage its unified suite of esteemed schools, institutes and centres to unlock opportunities within UQ and with external partners to:

- Graduate health, medical and behavioural science professionals who are champions of interprofessional collaborative practice, culturally competent and deeply respectful of Aboriginal and Torres Strait Islander peoples, and leaders in their respective disciplines.
- Address current and emerging health sector challenges, specifically the need for a flexible workforce with a diverse skill mix, and the need to provide person and family-centred health care through collaborative decision-making in interprofessional teams.
- Grow our research and impact by exploring 'wicked problems' from a multidisciplinary perspective in collaboration with consumers and communities.
- Attract research funding from a wide range of sources (philanthropy, competitive grants, government tenders, NGO, industry).
- Meet the complex health and well-being needs of the population across the lifespan.
- Provide our students with the optimal range of educational placement opportunities to support their learning.
- Work effectively and efficiently with a range of partners locally, nationally and internationally.
- Share resources and infrastructure to further our strategic ambitions and reach in education, research, and engagement.

Comprising nine esteemed schools, and an impressive suite of Faculty and School based institutes, and research centres, the Faculty will offer unparalleled opportunities for learning, discovery, and impact. From pioneering medical breakthroughs to advancing understanding of human behaviour and well-being, our interdisciplinary approach fosters holistic approaches to healthcare and societal well-being. With a commitment to interprofessional education and a focus on health, well-being, and behaviour change, we are at the forefront of shaping the future of healthcare and improving lives locally and globally.

The Faculty will possess enormous strengths spanning research, teaching, industry engagement and clinical practice and staff, students, and partners can engage with groundbreaking initiatives and programs across our schools of Biomedical Sciences, Dentistry, Health and Rehabilitation Sciences, Human Movement and Nutrition Sciences, Nursing, Midwifery and Social Work, Pharmacy, Psychology, Public Health, and Medical School.

Educational offerings are informed and complemented by research across a range of fundamental and clinical areas of importance through both faculty and school embedded centres and institutes, in particular the Frazer and UQ Mater Institutes, UQ's POCHE Centre for Indigenous Health, Child Health Research Centre, and UQ Centre for Clinical Research, as well as a number of other centres and alliances, including but not limited to Business and Economics of Health, Health Services Research, Youth Substance Use Research, Queensland Alliance for Environmental Health Sciences, RECOVER Injury Research, and Southern Queensland Rural Health.





## School of Public Health

The School of Public Health (SPH) is one of nine schools in UQ's new Faculty of Health, Medicine and Behavioural Science, and one of over twenty schools at the University of Queensland. SPH hosts a multidisciplinary range of research and teaching programs across the broad range of public health disciplines. We have a reputation for excellence nationally and internationally, ranked 4th in Australia and 30th globally in the Shanghai 2024 Global Ranking of Academic Subjects.

The School is a place with a strong culture aligned around our mission: Working together to improve the health and wellbeing of populations in a changing and inequitable world. It is a place where people like to work, and students like to study. Our research addresses some of the world's most pressing population and public health challenges. The School offers teaching programs that are relevant to leading and emerging health issues – our Master of Public Health (MPH) was the first in the Asia Pacific region to achieve curriculum validation from the Agency for Public Health Education Accreditation (APHEA).

Consistent with our mission and values, the School prioritises commitment to First Nations sovereignty, and equity, diversity and inclusion. SPH prides itself on its research excellence, with strengths in First Nations Health and Wellbeing, Women's Health, Mental Health and Tobacco Control, Non-Communicable and Infectious Diseases, and more recently Environment and Health.



## Role of the Postdoctoral Research Fellow / Research Fellow / Senior Research Fellow - Epidemiology

### About this opportunity

Join an NHMRC-funded women's health project within the School of Public Health, working alongside a team of epidemiologists, statisticians, and clinicians. We have two exciting opportunities for a Postdoctoral Research Fellow, Research Fellow, or Senior Research Fellow, each with tailored expectations based on experience and career stage:

**Postdoctoral Research Fellow (Level A):** Develop your emerging research profile with guidance and support from senior academics. Contribute to service and engagement activities while building autonomy over time.

**Research Fellow (Level B):** Advance your expertise and growing research profile to achieve national recognition. Contribute to effective supervision of Honours and Higher Degree by Research (HDR) students and actively manage service and engagement responsibilities.

**Senior Research Fellow (Level C):** Leverage your established national profile to develop an international reputation. Provide leadership in research, including the supervision and training of HDR students, while delivering high-level service and engagement.

These roles provide an outstanding opportunity to contribute to impactful research and shape the future of women's health outcomes.

### Duties

Key responsibilities include:

#### Postdoctoral Research Fellow (Level A)

- Develop an emerging research profile by producing quality publications and contributing to joint research projects.
- Support grant applications, knowledge transfer activities, and build a coherent research program.
- Provide effective supervision of Honours and Higher Degree by Research (HDR) students while contributing to researcher development.
- Support internal service activities, administrative processes, and develop external relationships with key stakeholders.

#### Research Fellow (Level B)

- Lead independent and team-based research to achieve national recognition, including publications and securing competitive research funding.
- Supervise Honours and HDR students, providing professional development and fostering researcher engagement.
- Actively contribute to internal governance, service roles, and cultivate partnerships with industry, government, and community stakeholders.
- Drive improvements in research processes, outcomes, and knowledge translation activities.



### Senior Research Fellow (Level C)

- Conduct high-impact, independent research that achieves national recognition and develops an international profile.
- Secure significant research funding and lead collaborative, strategic research projects across institutional, national, and international levels.
- Provide leadership in supervising HDR students and developing researcher capabilities, fostering responsible research conduct.
- Lead internal governance, advance external collaborations, and establish strong partnerships with industry and professional bodies.

### All Levels (A, B, C)

- Comply with University policies, occupational health and safety legislation, sustainability practices, and other relevant regulatory requirements.

## Other

Ensure you are aware of and comply with legislation and University policy relevant to the duties undertaken, including but not exclusive to:

- The University's [Code of Conduct](#).
- Requirements of the Queensland occupational health and safety (OH&S) legislation and related [OH&S responsibilities and procedures](#) developed by the University, Faculty, Institute or School.
- The adoption of sustainable practices in all work activities, and compliance with associated legislation and related University [sustainability responsibilities and procedures](#).
- Requirements of the *Education Services for Overseas Students Act 2000*, the *National Code 2007* and associated legislation, and related [responsibilities and procedures](#) developed by the University.





## About you

### Essential

- Evidence of training in advanced epidemiology.
- Proficiency in the use of SAS, STATA or R for complex data analyses.
- Evidence of experience in undertaking longitudinal analyses using large administrative data sets including the Pharmaceutical Benefits Scheme and state-based hospital morbidity data sets.
- Demonstrated understanding of the Australian healthcare system.

### In addition

#### At Research Focussed Academic Level A

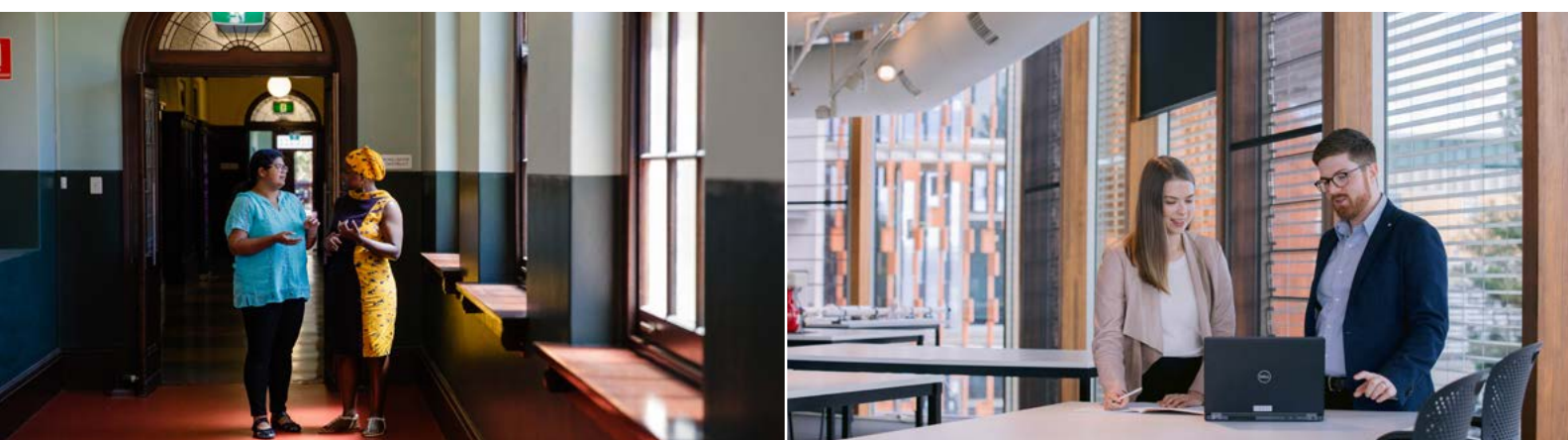
- Completion or near completion of a PhD in the discipline area.
- An emerging profile in research in women's health or chronic disease epidemiology.
- Evidence of publications in reputed refereed journals and presenting at conferences.
- Evidence of contributions towards successfully obtaining external research funding.
- Some experience in meaningful internal service roles and contributions towards external activities.

#### At Research Focussed Academic Level B

- Completion of a PhD in the discipline area.
- A growing profile in research in women's health or chronic disease epidemiology.
- A developing reputation and track record of publications in reputed refereed journals and presenting at conferences.
- Evidence of successfully seeking, obtaining and managing external research funding.
- Experience in meaningful internal service roles in conjunction with active contributions to external activities.

#### At Research Focussed Academic Level C

- Completion of a PhD in the discipline area.
- An established profile in research in the discipline area.
- National recognition in the area of expertise, with an internationally developing profile and an established record of publications in reputed refereed journal and presenting at conferences.
- A strong record of successfully seeking, obtaining and managing external research funding.
- A solid record of supervision of Honours and Research Higher Degree students to successful completion.
- A growing record of meaningful internal service roles in conjunction with a strong contribution to external activities.



## Conditions of employment

### Employment type

These are two full-time fixed term positions for up to two years at Academic Level A, B or C. Applications will be assessed in accordance with the University's [Criteria for Academic Performance](#).

### Salary and benefits

The full-time equivalent base salary at Level A will be in the range \$78,871 – \$105,004 plus super of up to 17%. The total FTE package will be in the range \$92,279 – \$122,854 per annum.

The full-time equivalent base salary at Level B will be in the range \$110,365 – \$130,765 plus super of up to 17%. The total FTE package will be in the range \$129,127 – \$152,995 per annum.

The full-time equivalent base salary at Level C will be in the range \$134,845 – \$155,246 plus super of up to 17%. The total FTE package will be in the range \$157,769 – \$181,638 per annum.

---

## How to apply

All applicants must supply the following documents through the [UQ Careers](#) portal:

- Cover letter specifying what level you are applying for
- Document addressing the 'About You' section
- Resume

To satisfy pre-requisite questions and ensure your application can be considered in full, all candidates must apply via the [UQ Careers](#) portal by the job closing deadline. Applications received via other channels, including direct email, will not be accepted.





## The University of Queensland

For more than a century, The University of Queensland (UQ) has created positive change for society by delivering knowledge leadership for a better world.

UQ ranks among the world's top universities, as measured by several key independent rankings, including the CWTS Leiden Ranking (35), U.S. News Best Global Universities Rankings (36), the Performance Ranking of Scientific Papers for World Universities (33), QS World University Rankings (40), Academic Ranking of World Universities (63), and Times Higher Education World University Rankings (77).

At UQ, we're changing the way higher education is imagined and experienced. Our students enjoy a rich campus experience, including a range of accommodation options, as well as innovative and flexible learning pathways, diverse and dynamic partnership opportunities, and an integrated digital and campus learning environment.

More than 55,000 students – including the majority of Queensland's highest academic achievers as well as top interstate and overseas students – study across UQ's 4 beautiful campuses in South East Queensland at St Lucia, Herston, Gatton and Dutton Park. They include around 20,000 postgraduate and approximately 21,500 international students who contribute to a diverse, supportive and inclusive campus community.

With a strong focus on teaching excellence, having won more national teaching awards than any other Australian university, UQ is committed to providing students with the best opportunities and practical experiences during their time with us, empowering them with transferable knowledge and skills that will prepare them to exceed expectations throughout their careers.

UQ's 332,000 graduates are an engaged network of global alumni spanning 184 countries, and include more than 17,700 PhDs.

UQ's 6 faculties, 8 globally recognised research institutes and more than 100 research centres attract an interdisciplinary community of 2,500 scientists, social scientists and engineers, who champion research excellence and continue UQ's tradition of research leadership. This is reflected in UQ being the number one recipient of Australian Research Council Fellowships and Awards nationally across all scheme years (452 awards worth \$339 million).

UQ has an outstanding track record in commercialising innovation, with major technologies employed across the globe and gross product sales of more than \$57 billion.

UQ is one of only 4 Australian members of the global Universitas 21, a founding member of the Group of Eight (Go8) universities, a member of Universities Australia, and a member of the Association of Pacific Rim Universities (APRU).

UQ employs more than 7,500 academic and professional staff (full-time equivalent) and has a \$2.47 billion annual operating budget.



## Governance

The University of Queensland is governed by a 22-member Senate representing University and community interests. Senate is led by the Chancellor, elected by the Senate. The University of Queensland Act 1998 grants Senate wide powers to appoint staff, manage and control University affairs and property, and manage and control finances to promote the University's interests.

[uq.edu.au/about/governance](http://uq.edu.au/about/governance)

## Strategic direction

By 2032, UQ will be known as a university that:



Delivers highly sought-after graduates, who are prepared for future success through rich and broad educational experiences



Leads as a premier provider of high-quality postgraduate and lifelong learning opportunities



Leverages the breadth and depth of its research capabilities and vibrant precincts to address the world's most pressing challenges



Is a trusted and agile partner widely regarded as a leader in entrepreneurship, knowledge exchange and commercialisation



Has an extensive global reach in education and research with a strong commitment to capacity building in the Indo-Pacific



Breaks down barriers to education through the targeted and effective Queensland Commitment



Is values-led, deeply committed to delivering for the public good and supporting our people, leading reconciliation, and embracing different life experiences and perspectives





## Strategic plan 2022-2025

### Our vision

Knowledge leadership for a better world.

### Our mission

Our core purpose is to deliver for the public good through excellence in education, research and engagement with our communities and partners: local, national and global.

### Our values

#### *What we strive for*

#### **Creativity**

We apply our creativity as a way of seeking progress. We value new ideas, seek fresh perspectives and pursue game-changing innovations and opportunities

#### **Excellence**

We strive for excellence in everything we do. We apply the highest standards to our work to achieve the greatest impact for the benefit of communities everywhere.

#### *Central to what we do*

#### **Truth**

Truth is central to all that we do as a university. We seek truth through our focus on the advancement and dissemination of knowledge, and our deep commitment to academic freedom and freedom of expression.

#### *How we work together*

#### **Integrity**

We always act with integrity. As stewards of the University's resources and reputation, we are honest, ethical and principled.

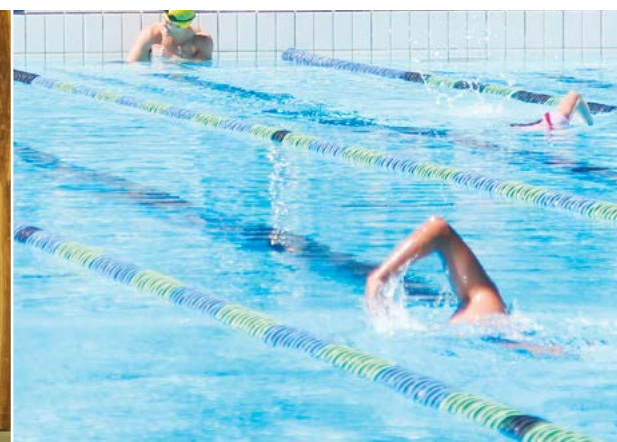
#### **Courage**

We are courageous in our decision-making. We are ambitious, bold and agile. We demonstrate moral courage, so that we are always guided by a sense of what is right.

#### **Respect and inclusivity**

We provide a caring, inclusive and empowering environment for all. We engage respectfully with one another and promote the value that our diversity brings to our whole community.

[about.uq.edu.au/strategic-plan](https://about.uq.edu.au/strategic-plan)

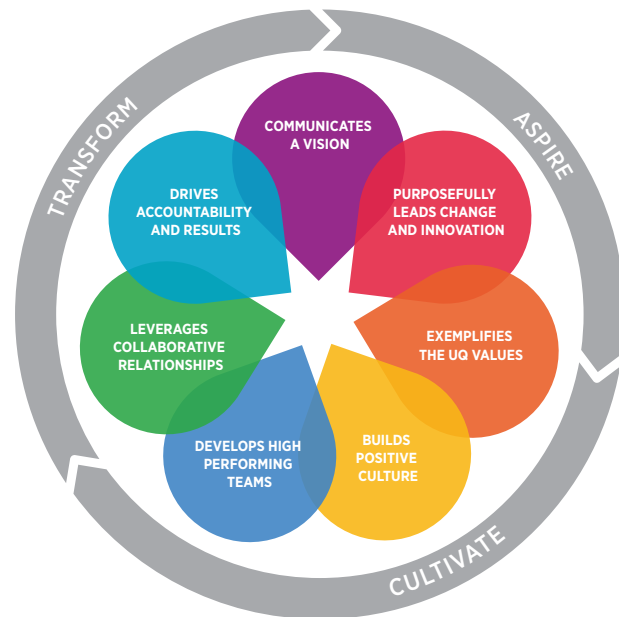


## UQ Leadership Framework

As a leader at UQ you are a role model for our values.

Our leaders act with integrity and prioritise the development and growth of our people to ensure excellence for the long term.

**The Leadership Framework is underpinned by seven capabilities expected by all UQ leaders.**



### Aspire

*Enact UQ's vision, anticipate change and leverage innovation.*

#### 1. Communicates a Vision

Develops and communicates a clear vision and direction for the future, aligned with UQ's vision, values and aspirations.

#### 2. Purposefully leads change and innovation

Remains agile and effectively manages change and unexpected disruption by finding innovative solutions.

### Cultivate

*Exemplify the UQ values and develop high performing teams and positive culture.*

#### 3. Exemplifies the UQ Values

Role models UQ values and demonstrates loyalty to the University.

#### 4. Develops high performing teams

Develops empowered and high performing teams, investing time, energy and resources into helping people achieve their potential.

#### 5. Builds positive culture

Creates respectful and constructive workplaces where people feel safe and valued, and addresses unacceptable behaviours.

### Transform

*Deliver results that make a difference and create long-term value.*

#### 6. Leverages collaborative relationships

Identifies opportunities to collaborate and forges partnerships, embracing the ethos of 'One UQ'.

#### 7. Drives accountability and results

Holds self and others accountable for delivering against objectives and is focused on creating long-term value for UQ.





## About Brisbane

Brisbane is the sunny, sophisticated capital city of Queensland and gateway to many famous attractions. Australia's third largest city and fastest-growing capital with a population of more than 2.5 million, it offers a safe, friendly, multicultural environment characterised by the Brisbane River, parklands, convention facilities, museums, theatres, art galleries, a casino, malls, shopping districts, and a host of cosmopolitan restaurants and cafes.

Selected as host city for the 2032 Olympic and Paralympic Games, visitors can expect unbeatable sports experiences in 37 world-class venues, set against a backdrop of iconic beachfronts, breath-taking rural hinterland, and an exciting city rich in culture and entertainment.

Brisbane also offers a range of lifestyle benefits. Combine artistic and outdoor adventures at South Bank, where cultural institutions and restaurants meet riverside gardens and a lagoon. Take a paddle steamer or ferry down the Brisbane River, abseil Kangaroo Point cliffs, or bike ride through the City Botanic Gardens. Or enjoy a day trip to Moreton Island, Noosa, the Sunshine Coast or Gold Coast, or visit beautiful national parks, rainforests and tourist attractions such as Australia Zoo, Dreamworld and other theme parks.

The perfect place to raise a family, Brisbane has been dubbed a food and drink lover's paradise, and is also one of Australia's most liveable and affordable capital cities, with sunny days almost all year round and enough rainfall to keep the city and suburbs cool and green.

A few hours drive north from Brisbane is the Great Barrier Reef, one of the 'natural wonders of the world'. As the largest World Heritage Area, it stretches more than 2,000 kilometres alongside the coast, and is home to around 1,500 species of fish and 350 types of coral. Stradbroke and Fraser Islands are also world-famous attractions close to Brisbane, featuring some of the largest sand dunes in the world.

### A leader in education

Brisbane has a wide range of high-quality schools at primary and secondary level, religious and non-denominational, single-sex and co-educational, with many offering excellence programs or other specialty features such as the International Baccalaureate. Brisbane also offers some of the greatest learning institutes in Australia, with 3 internationally recognised universities covering all areas of study from law and medicine through to business, marketing, tourism, IT and biotechnology. The University of Queensland (UQ) is one of Australia's leading research and teaching institutes, ranking among the world's top universities.

### Lifestyle

In the heart of Brisbane city, Queen Street Mall is a vibrant shopping and lifestyle precinct and is Australia's most popular pedestrian mall. Brisbane is also the home for many of Queensland and Australia's major sporting events in rugby league, rugby union, AFL and cricket.

Brisbane residents have excellent access to health care in both public and private sectors, covering hospitals, general practitioners, dentists, and other allied healthcare professionals. The numerous public and private hospitals include the Princess Alexandra Hospital, the Mater Hospital network, the Queensland Children's Hospital, and the Royal Brisbane and Women's Hospital. Urgent and emergency medical care is readily available to everyone.



## Further information

General information on the University is available through the University's website: [uq.edu.au](http://uq.edu.au)

Other documents which you may wish to refer to include:

- Annual Report: [about.uq.edu.au/organisation/policies-procedures-guidelines/annual-reports](http://about.uq.edu.au/organisation/policies-procedures-guidelines/annual-reports)
- Governance: [about.uq.edu.au/governance](http://about.uq.edu.au/governance)
- Key statistics: [pbi.uq.edu.au/ClientServices/UQStatistics/index.aspx](http://pbi.uq.edu.au/ClientServices/UQStatistics/index.aspx)
- Organisation chart: [about.uq.edu.au/files/5643/org-chart.pdf](http://about.uq.edu.au/files/5643/org-chart.pdf)
- Research at UQ: [research.uq.edu.au](http://research.uq.edu.au)
- Strategic Plan 2022–2025: [about.uq.edu.au/strategic-plan](http://about.uq.edu.au/strategic-plan)
- UQ Global Strategy: [global-strategy.uq.edu.au](http://global-strategy.uq.edu.au)
- UQ Reconciliation Action Plan: [about.uq.edu.au/reconciliation/plan](http://about.uq.edu.au/reconciliation/plan)
- UQ Aboriginal and Torres Strait Islander Employment Strategy: [staff.uq.edu.au/files/24066/uq-indigenous-employment-strategy-2019.pdf](http://staff.uq.edu.au/files/24066/uq-indigenous-employment-strategy-2019.pdf)







THE UNIVERSITY  
OF QUEENSLAND  
AUSTRALIA

CREATE CHANGE

[uq.edu.au](http://uq.edu.au)